

How to get to

Hotel Mercure

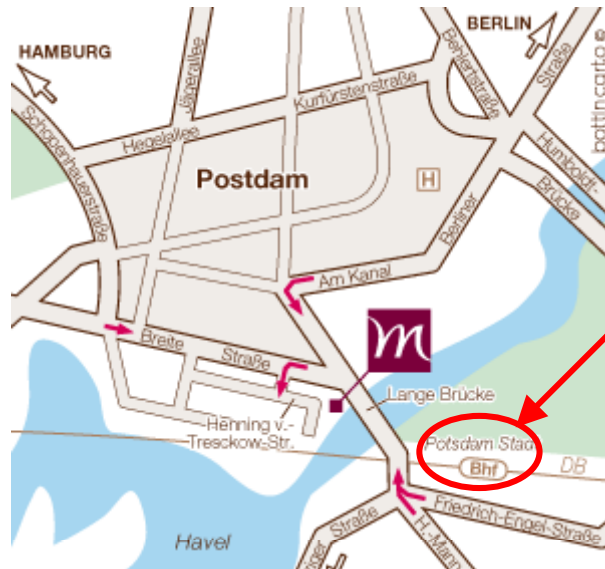
Lange Brücke
 D - 14467 Potsdam
 Tel.: +49 (0)331-

2722

Fares:

BVG Tickets can be used for all public transport in and around Berlin (Potsdam included).

Prior to your travel you have to purchase a ABC Single Ticket (2,80 €) at the ticket machines on the train platforms or at the BVG ticket counter in the stations or at the airports. Please validate you ticket before you enter the train, bus, underground or city railway (S).



Potsdam Hauptbahnhof (Main Station)

from the **Airport Berlin - Tegel:**

Station/Stop

in: Airport Tegel
out: S Charlottenburg

Line/direction

Bus 109 towards "S+U Zoologischer Garten"

in: S Charlottenburg
out: Potsdam Hbf

S7 (city railway) towards "Potsdam Hbf"

This connection runs every 10 minutes and takes about 0:50 h.

from the **Airport Berlin - Schönefeld:**

in: S Flughafen Berlin-Schönefeld Bhf.
 (outside the airport)
out: S Westkreuz

S9 (city railway) towards "Spandau Bhf"

in: S Westkreuz
out: Potsdam Hbf

S7 (city railway) towards "Potsdam Hbf"

This connection runs every 20min and takes about 1:20h.

OR:

Station/Stop

in: S Flughafen Berlin-Schönefeld Bhf.
 (outside the airport)
out: Potsdam Hauptbahnhof

Line/direction

Train RB22 towards "Potsdam Hauptbahnhof"

This connection runs every hour (7.54, 8.54 etc.) and takes about 1 h.

Get out of Potsdam Hauptbahnhof, main exit, turn right and you will see the tower of Mercure Hotel, cross the bridge to get there.



How to get to

HFF Hochschule für Film und
Fernsehen "Konrad Wolf"
Marlene-Dietrich-Allee 11
14482 Potsdam
Tel.: +49 (0) 331/6202791

1) from Airport to Potsdam train stations

Fares:

BVG Tickets can be used for all public transport in and around Berlin (Potsdam included).
Prior to your travel you have to purchase an ABC Single Ticket (2,80 €) at the ticket machines on the train platforms or at the BVG ticket counter in the stations or at the Airports. Please valid you ticket before you enter the train, bus, underground or city railway (S).

from the **Airport Berlin Tegel:**

Station/Stop

in: Airport Tegel
out: S Charlottenburg

Line/direction

Bus 109 towards "S+U Zoologischer Garten"

in: S Charlottenburg
out: S Griebnitzsee (Potsdam)

S7 (city railway) towards "Potsdam Hbf"

From there, follow the directions in section 2).

This connection runs every 10 minutes and takes about 0:50 h.

from the **Airport Berlin Schönefeld:**

Station/Stop

in: S Flughafen Berlin-Schönefeld Bhf.
(outside the airport)
out: S Westkreuz

Line/direction

S9 (city railway) towards "Spandau Bhf"

in: S Westkreuz
out: S Griebnitzsee (Potsdam)

S7 (city railway) towards "Potsdam Hbf"

This connection runs every 20min and takes about 1:20h.

OR:

Station/Stop

in: S Flughafen Berlin-Schönefeld Bhf.
(outside the airport)
out: Medienstadt Babelsberg

Line/direction

Train RE7 towards "Dessau"

From there, follow the directions in section 2).

This connection runs every hour (7.25, 8.25 etc.) and takes about 1 h.

2) from Potsdam train stations to HFF

From S Griebnitzsee

Get off the train and step down the stairs to the exit and turn to your right. (Follow the signs to "Filmpark Babelsberg"). In front of the train station there is a bus stop. You can either take bus 696 (not during the weekend, get off at Studio Babelsberg, walk through the gate and keep on walking straight ahead for about 500m until you get to a turnstile, behind which you see HFF already). Alternatively you can walk. The walk takes about 10 minutes.

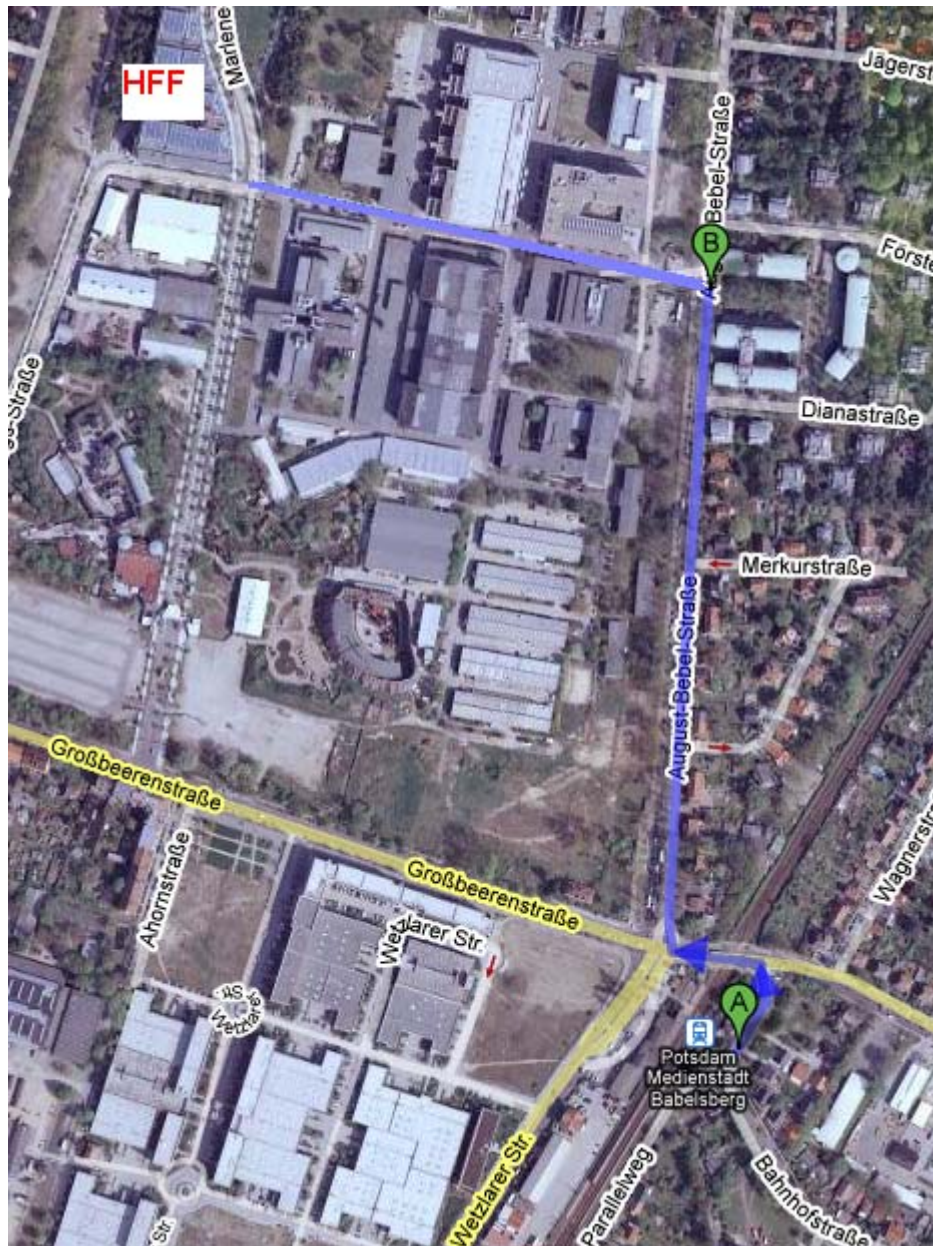
Walk: walk along Prof.-Dr.-Helmert-Str. next to the railway, turn to your left at the end of the street, entering August-Bebel-Str. Walk straight ahead. The third street to your right is Marlene-Dietrich-Allee. Walk Marlene-Dietrich-Allee until the end: to your right side you see the HFF-building. Enter through main entrance (Marlene-Dietrich-Allee 11).

Bus: take bus 696 direction "Robert-Baberske-Str." The bus runs every 20 minutes. Get off the bus after two stops at "Studio Babelsberg". You are at the main entrance of "Medienpark Babelsberg". Walk through the arc and down the main street. At the end there is a spinning door. Go through it and you are in front of the HFF.



From train station/S Medienstadt Babelsberg

Walk: get off the train and walk to the crossroad next to the train station building, turn right into the August-Bebel-Str. Follow the street until you reach the main entrance of "Studio Babelsberg" on your left. Walk through the arc and straight ahead the main street. At the end, there is a turnstile. Go through it and you are in front of HFF.



For further information concerning your trip to HFF, please check: <http://www.bvg.de>, www.db.de or www.vip-potsdam.de.

For a useful public transport map of the greater Berlin area, please refer to

<http://www.bvg.de/index.php/en/Bvg/Detail/folder/699/id/2719/nb/1/name/BVG+Network+Maps>